



SIMPLE LIFE



SIMPLE LIFE



## Wye Road, Partington

£1,350 PCM

This development brings a collection of brand-new, stylish rental homes perfect for families and working professionals.

The Dee is a beautiful four bedroom modern home, built over two levels.

Downstairs there is a large living room, WC and hallway leading to the rear of the property where you will find a stunning kitchen/dining area equipped with integrated kitchen appliances and contemporary units. The kitchen/dining area also benefits from French windows which take you into your own private rear garden.

Upstairs you will find a family sized bathroom including a stylish white bathroom suite and four bedrooms – two doubles and two singles. The master bedroom benefits from built-in wardrobes and an en-suite bathroom fitted with its own shower and cubicle.

Surrounding locations of the site include Trafford, Altrincham, Irlam and Manchester city centre. This provides plenty of choice for shopping, leisure and activity for our residents. There is great access to transport links and road connectivity, with the M6 and M62 in close proximity to the site. Irlam train station is very close to Millbank Lock, offering quick routes to Manchester, Liverpool, Warrington and Chester. In addition, Manchester Airport is located 12 miles away from the development.

Educational needs are met with numerous of Outstanding and Good Ofsted rated schools nearby. Just outside of the development, you will find Our Lady of Lourdes RC Primary School. Other local schools include Forest Gate Academy, Fairfield House School, St Mary's CofE Primary School and Cadishead Primary School.

Deposit £1550

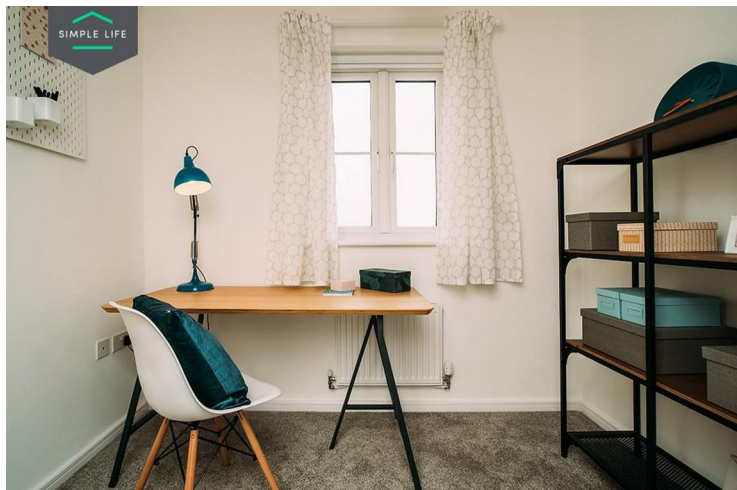
Unfurnished

Council Tax C

Available 22nd November 2024







## Key Features

- Parking space
- Fitted wardrobes to main bedroom
- Fridge freezer
- Oven and hob
- Modern, white kitchen units
- Security alarm system
- Dishwasher
- Washing/drying machine
- Light wash wood effect flooring
- Patio area in the private back garden

## Location

